

REDWOOD THEATRE COMPANY
MEDIA KIT



REDWOOD THEATRE COMPANY

**Black box studio productions, virtual shows,
professional ice theatre, traveling troupe of artists and a
new youth performance program.**

501(c)(3) Nonprofit

CREATED BY

CARMEN MITCHELL

www.redwoodtheatrecompany.com

rtc@redwoodtheatrecompany.com



Redwood Theatre Company

RTC Press Kit

Prepared by Carmen Mitchell

on March 3, 2021

OUR STORY

RTC began as a group of friends, seeking artistic growth and an opportunity to create and produce their own productions to share with the community. Over the past few years, they have produced many musical cabarets, staged readings, master classes and 15 full-scale theatrical productions, two of which, were original musicals, written by local artists.

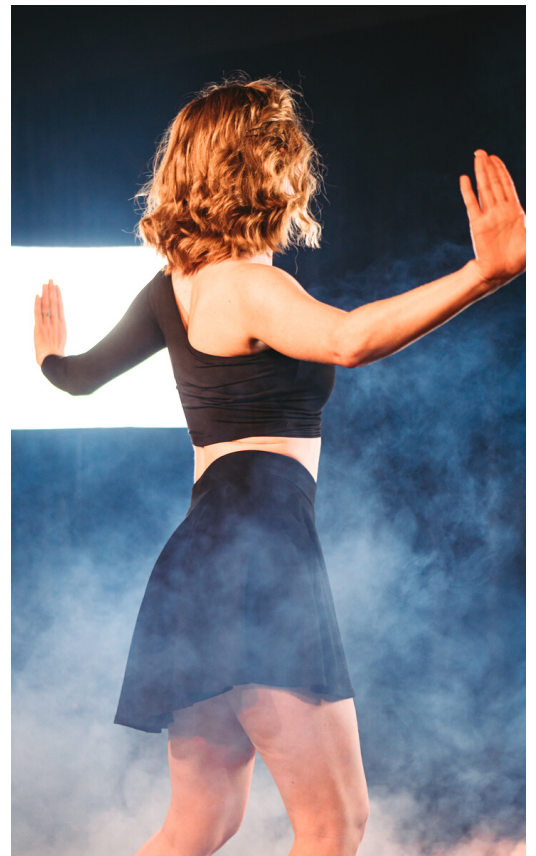
What started off as a fun project in the back room of a ballet studio, has now turned into a thriving theatre company.

Our mission has always been to create and share performances with the community as we continue to remain dedicated to the lifelong pursuit of artistic growth.

WHO WE ARE TODAY

We are now a company of professional performers focused on producing virtual shows, live productions and original works. RTC also hosts a variety of youth performance workshops and outreach programs.

The RTC studio is a cozy black box theatre, nestled in the beautiful town of Healdsburg, right off the main Square.





Redwood Ice Theatre Company

RTC Press Kit

Prepared by Carmen Mitchell

on March 3, 2021

ICE THEATRE

Introducing a new professional branch of RTC:
Redwood Ice Theatre Company.

RITC features professional figure skaters and world competitors in both live and virtual productions.

Our ice theatre began when the COVID pandemic forced the closure of the arts industry around the world. When most theaters and performance venues had gone dark, we wanted to find new, innovative ways to share a little inspiration and joy.

RITC has produced a series of professional outdoor and studio productions on artificial ice, as a free gift to the community.

Our goal is to create high level productions and make professional ice skating shows more accessible to the general public.

RITC has recently entered into a partnership with the famous Snoopy's Home Ice rink in Santa Rosa. This partnership will allow RITC to create new "on ice" productions, as we still continue to produce outdoor shows on artificial ice.

All of these projects were professionally filmed and can still be found on our website.

www.redwoodtheatrecompany.com/skating-shows





Theatrical Productions

RTC Press Kit

Prepared by Carmen Mitchell

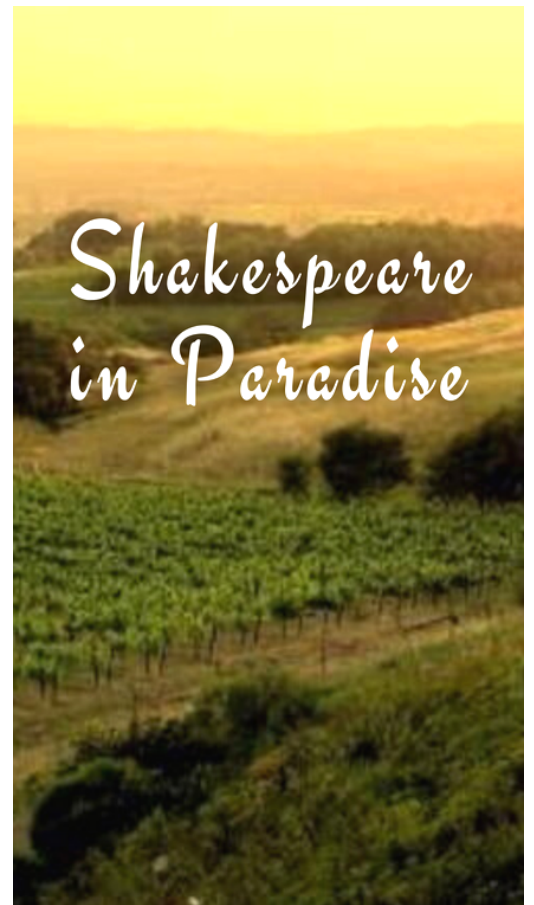
on March 3, 2021

STUDIO PRODUCTIONS

Redwood Theatre Company will be hosting small, in-person studio shows and filmed virtual productions.

RTC will be showcasing a series of monologues, shot scenes and spoken word projects.

In our mission to create an inclusive environment, Redwood Theatre Company will also continue to showcase the work of artists with developmental disabilities and other special needs.



OUTDOOR SHAKESPEARE

Redwood Theatre Company will be expanding our productions beyond the blackbox studio in Healdsburg.

RTC will be bringing abridged Shakespeare Showcases and other theatrical productions to various outdoor locations in the beautiful wine country of Sonoma County.





Virtual Productions

RTC Press Kit

Prepared by Carmen Mitchell

on March 3, 2021

PRODUCTION COMPANY

This past year, Redwood Theatre Company became partners with FTA Productions, *For The Art*.

FTA is a media production company working alongside bold brands and artists to create cutting-edge media content.

This partnership allows us to create visually stunning, high quality virtual shows. Learn more about FTA productions: fortheartproductions.com

VIRTUAL SERIES

Since the theatre community was unable to host live productions due to the COVID-19 pandemic, RTC created a virtual show series in collaboration with FTA Productions.

These shows were designed to be a free gift for the community. The purpose was to spread some joy and inspiration during the difficult shut-down.

This series was such a success, RTC is now planning to continue creating regular virtual shows in the future.





Outreach Programs

RTC Press Kit

Prepared by Carmen Mitchell

on March 3, 2021

YOUTH OUTREACH

RTC is committed to finding ways to include BIPOC & LGBTQIA+ artists in our programs. We are also actively looking for new ways to reach out the LatinX & Indigenous communities.

RTC has created a new team dedicated to growing our outreach programs and sponsorships.

We are always looking for new opportunities to collaborate with other programs & organizations. Please contact us if you interested in becoming a sponsor or would like to learn more about how to help young artists who could benefit from this program.



FULL INCLUSION

RTC has produced several full-inclusion productions featuring performing artists with developmental disabilities and other special needs.

Our hope is to be able to grow this aspect of our company and collaborate with other organizations in the area.





Youth Camps & Workshops

RTC Press Kit

Prepared by Carmen Mitchell

on March 3, 2021

YOUTH PROGRAMS

RTC is thrilled to announce our new Youth Performance Programs! RTC camps and workshops will be teaching performance techniques, nurturing creativity and learning fun group routines to stretch both bodies and imaginations.

Our camps will feature theatrical performances, dance and beginning skating skills.

With our staff of incredible professional performers and access to these artificial ice panels, we hope to make figure skating and the arts more accessible to the community.

Our goal is to share our passion and knowledge about the performing arts with the next generation. Our mission is to inspire up-and-coming artists while tapping into emotional intelligence and sharing the joy and benefits of performing. These programs will focus on creating a joyous, inclusive & inspiring experience!

PROJECT DESCRIPTION

Teaching performance techniques, nurturing creativity and learning a fun group routine to stretch both our bodies and imaginations.

This camp focuses on creating a joyous & inspiring experience!





PERFORMANCE CAMPS

REDWOOD THEATRE COMPANY

CAMP OBJECTIVES

- Sharing new performance techniques
- Nurturing creativity
- Teaching new skating skills & choreography

CAMP OUTLINE

- Each camp will be three hours long.
- The camp will begin with fun games and movement exercises.
- The campers will then learn basic performance skills on the ground and beginning skating skills on artificial ice panels. Rental skates included.
- There will be a break for water and snacks followed by time to create a handheld prop that campers take home!
- Everyone will learn a short piece of choreography to perform on the artificial ice.
- A professional video will be filmed of the performance and a video link will be given to the campers.



COVID-19 PRECAUTIONS

CDC and County Health Officer protocols will be followed to reduce the risk of Covid-19 spread.

Children must bring and wear their own face masks. Social distancing and hand sanitizing measures will be implemented by both the youth and the staff.





Help Us Grow Our Company

RTC Press Kit

Prepared by Carmen Mitchell

on February 20, 2021

WHERE WE WANT TO GO

Redwood Theatre Company & Redwood Ice Theatre are actively working towards raising funds to grow the professional companies.

Our goal is to be able to create and share more performances with the community, both in-person and virtually.

Our dream is to continue growing our youth workshops, expand our outreach programs, create more opportunities for artists with disabilities and create more jobs for professional artists.

LEARN MORE

Find out ways that you can help us bring more professional performances to the community, elevate the youth of Sonoma County and create an inspiring & inclusive experience.

BECOME A SPONSOR

Contact us to learn more about how you can sponsor a student, become a donor for our next professional show or help us grow our outreach programs.





REDWOOD THEATRE COMPANY

WWW.REDWOODTHEATRECOMPANY.COM



FOUNDR & EXECUTIVE DIRECTOR

Carmen Mitchell

Founder of Redwood Theatre Company & FTA Productions

Carmen Mitchell grew up as a competitive figure skater and ballet dancer. She now works as a professional singer and actor in both New York and California. Her body of artistic work includes many leading roles in musicals, short films, commercials and professional ice skating shows.

Carmen recently appeared as a principal performer on a National Tour of Disney on Ice where she debuted the role of the “Live Host” and was also hired to do voice over work for Feld Entertainment

Some of her favorite roles include: Louise in Gypsy, Christine Daae in Phantom of the Opera, Maria in West Side Story, Fantine in Les Misérables, Lady of the Lake in Spamalot, Juliet in Romeo & Juliet, Viola in Illyria, Aida in the musical Aida, and Brooke Windham in Legally Blonde The Musical.

During her competitive ice skating career, Carmen became a US Figure Skating double gold medalist and was the Artistic National champion. She also won several artistic awards including "Most Artistic Freeskate" at Showcase competitions in the Bay Area. She also danced as a soloist with the San Francisco Academy of Ballet and Santa Rosa Dance Theater.

Carmen attended a performing arts high school, then went on to study Performing Arts and Social Justice at the University of San Francisco and Santa Rosa Junior College.

Carmen has a passion for social justice work. After college, she worked as a performance director for artists with special needs and developmental disabilities. She is also the co-director of the FTA Protest Art Series, creating social awareness and community connections through art.

As Carmen pursues a career in performance, she continues to forever remain a student of the arts.



ICE THEATRE & CAMP DIRECTOR

Kim Navarro

Kim Navarro started skating at the age of three at Snoopy's Home Ice. Not long after, at the age of ten, she made her debut in the Charles M. Schulz professional Christmas show and had the unique opportunity to perform in these professional shows for many years to follow. She competed in Singles, Pairs, Ice Dance, and Synchronized Skating and earned her USFS Gold Medal in Moves in the Field, Freestyle, and Ice Dance.

As a competitive ice dancer with partner Brent Bommentre, Kim became a Two-Time U.S. Bronze Medalist, Two-Time World Team Member, 2008 Four Continents Championships Bronze Medalist and an alternate to the 2006 and 2010 Winter Olympic Games. They earned the Professional Skaters Association's "Best Ice Dance Performance" at the 2006 U.S. Figure Skating Championships.

As a professional skater, Kim performed in numerous ice shows all over the world including *Stars On Ice*, *Holiday On Ice*, *Broadway On Ice*, *Sun Valley On Ice*, *An Evening with Scott Hamilton and Friends*, *Nancy Kerrigan's Halloween On Ice*, and many Disson Skating television specials. She performed with Ice Theatre of New York and is a founding company member of Ice Dance International. She and Bommentre appeared in an episode of the television show *Glee* and competed as part of the act "Aerial Ice" on the quarter-finals of NBC's *America's Got Talent*.

Kim graduated from Columbia University, cum laude, with a degree in English and a minor in Dance and is currently pursuing a Masters in Liberal Arts at Stanford University. She is the Co-Artistic Director and Performance Workshop & Youth Program Director of the Redwood Ice Theatre Company and a figure skating instructor at Snoopy's Home Ice.



REDWOOD THEATRE COMPANY

WWW.REDWOODTHEATRECOMPANY.COM



DEVELOPMENT DIRECTOR

Lorenzo Alviso

No stranger to the world of Non-profits, Lorenzo has helped incorporate and run programs for educational and charitable non-profits including the H.O.P.E. for Healing Institute in Marin county where he raised money for children's oxygen treatment as well as planned and assisted with teaching CEU certifiable courses to RN's in California. After gaining sales and marketing experience from local and professional theatre companies in the a north Bay, Lorenzo is excited to bring his knowledge, charisma and oh-so-Sonoma County personality to Redwood Theatre Company.

Besides contributing artistically to the productions, Lorenzo will be coordinating grants, scholarships and fundraising efforts between RTC and the amazing community members and businesses of Sonoma County and beyond.



EXECUTIVE ADVISOR

Tom Mitchell

Tom Mitchell, Ph.D. has spent his adult life coaching and teaching others how to discover their unique, greatness within. His passion for exploring the boundaries of performance excellence began as an athlete in his native state, Pennsylvania. His avid study of sport psychology, motivation, and leadership, has led Tom to a richly varied career as a college coach and professor, motivational speaker, NBA sport psychology counselor, business coach and team building consultant.





REDWOOD THEATRE COMPANY

WWW.REDWOODTHEATRECOMPANY.COM



ICE THEATRE CO- DIRECTOR Lisa Navarro

Lisa brings more than 50 years of Ice skating experience to this project. Lisa competed and performed as an elite pair skater in competitions, professional ice shows and televised skating specials. She was a principal skater and Associate Choreographer for many of the beloved Charles Schulz Christmas shows in Santa Rosa. During her long career Lisa has helped direct and choreograph skating shows and special skating projects for Snoopy's Home Ice, Woodstock Ice Productions, California's Great America and Aerial Ice Extreme.



OUTREACH COORDINATOR Madeline Brown

Madeline Brown is a trained ballet dancer and professional performing artist in Sonoma County. She has a Bachelor of Science in Marketing from San Francisco State University. She is currently working for the City of Santa Rosa in the Office of Community Engagement.



DANCE CAMP DIRECTOR Anakarina Swanson

Anakarina is a professional dancer and dance teacher from Sonoma County, Ca. She has been a company member with several renowned Hip Hop Dance crews in the Bay Area. She was a director of multiple dance companies at the Dance Center Studio in Santa Rosa. She is now the lead dance instructor for our Youth Camp series.

PROFESSIONAL COMPANY

Redwood Theatre Company is creating new jobs for professional singers, actors, dancers and figure skaters. We want to bring a unique type of entertainment experience to Sonoma County.

Our mission is to create and share performances with the community as we continue to remain dedicated to the lifelong pursuit of artistic growth.

RTC is committed to finding ways to include BIPOC & LGBTQIA+ artists in our programs. We are also actively looking for new ways to reach out the LatinX & Indigenous communities.



“

FOR
THE
ART

”

THE NEXT GENERATION

We are so thrilled to be creating these camps. Our goal is to share our passion and knowledge about the performing arts with the next generation. With our artificial ice panels, we hope to make figure skating more accessible to the community. Our mission is to inspire and elevate up-and-coming artists while nurturing the joy and benefits of performing.

